



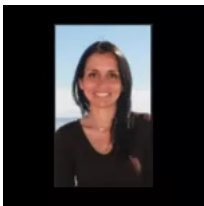
**\$700,000**

## **801 PALACIO DEL MAR TOWER 2 - CARRETERA LIBRE TIJUANA - ENSENADA KM. 50.5 EL DESCANSO 22710**

<https://www.bajaopenhouse.com>

- 3 beds
- 3 baths
- Condominium
- For sale
- 2870.27 sq ft

Brand-new oceanfront 3-bedroom condo for sale in Palacio del Mar Inside the Condo: Experience the stunning ocean views that can be enjoyed from every part of the living areas in this condo. The three-bedroom corner units boast an expansive wrap-around balcony with glass sliding doors that also encircle the front of the condo with access [...]



**Beba Cabello**

Baja Open House

---

## **Amenities & Features**



**Amenities:** 24-hour security, Basketball Courts, BBQ Area, Beach Access, Covered parking, Gardened Oceanfront walkway, Gym, Jacuzzi, Oceanfront pool, Swimming pool, Tennis Court, Walkways

