



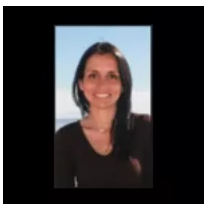
\$2,250

**1202 PALACIO DEL MAR, CARRETERA LIBRE
TIJUANA - ENSENADA KM. 50.5, EL
DESCANSO, PLAYAS DE ROSARITO, BAJA
22746**

<https://www.bajaopenhouse.com>

- 2 beds
- 2 baths
- Condo
- For rent
- 1930 sq ft

Also available for rent for shorter terms: 1 month, 3 months, 6 months. Rates vary depending on length of lease. Please feel free to contact us for more information about shorter term rentals. Palacio del Mar is an exclusive high-end community located on the Rosarito Baja coast, just 35 minutes away from the San Diego [...]



**Beba Cabello - Rosarito Real Estate
Broker | Baja Open House**

Baja Open House

beba@bajaopenhouse.net

Basics



Date added: Added 2 years ago

Type: Condo

Bathrooms: 2 baths

Area, sq ft: 1930 sq ft

Category: For rent

Bedrooms: 2 beds

Floor level: 12

Building Details

Garage spaces: 2

Amenities & Features

Amenities: 24-hour security, BBQ Area, Beach Access, Club house, Covered parking, Gym, Jacuzzi, Oceanfront pool, Swimming pool, Tennis Court, Trees / Shrubs

Features: Balcony, Ceiling Fan, Central Elevator, Dishwasher, Dryer, Fully Equipped, Furnished, Heating, High speed internet available, Laundry Room, Microwave, Ocean view, Pets Allowed, Refrigerator, Stove, Walking closets, Washer

