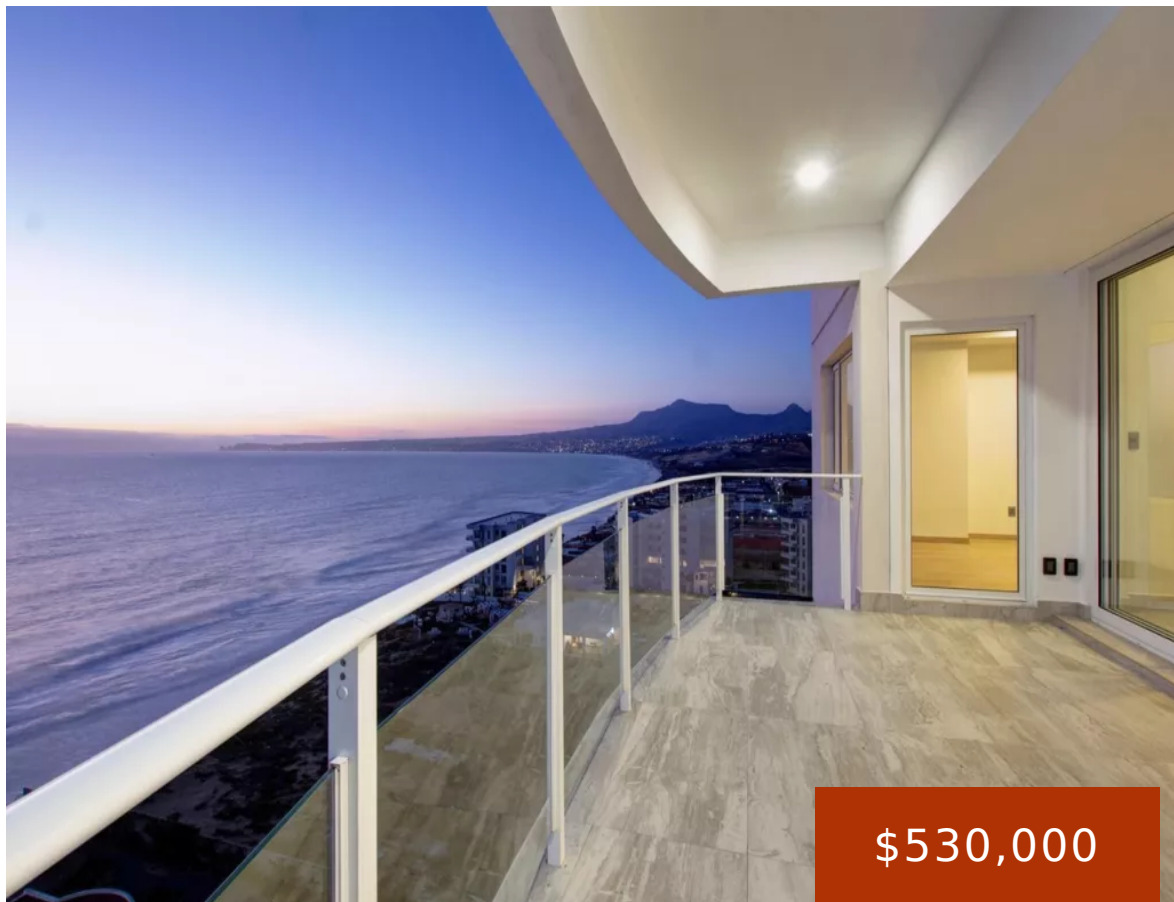


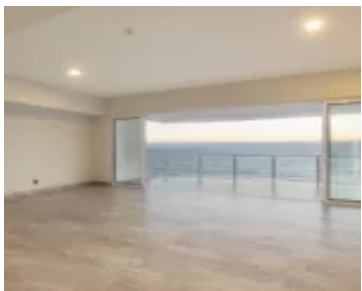
1102 PALACIO DEL MAR, CARRETERA LIBRE TIJUANA - ENSENADA KM 50.5, EL DESCANSO, PLAYAS DE ROSARITO, BAJA 22746

<https://www.bajaopenhouse.com>

1102 Palacio del Mar, Carretera Libre Tijuana - Ensenada Km 50.5, El Descanso, Playas de Rosarito, Baja 22746

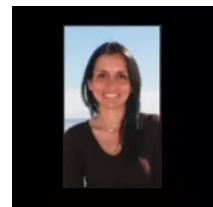


\$530,000



1102 Palacio del Mar Tower II Brand-new ocean view condo available in Palacio del Mar. This 2-bedroom, 2-bathroom condo features amazing ocean views from every room and a 180° view from the 11th-floor. **INSIDE THE CONDO** Be greeted by wide ocean views as soon as you walk in. The kitchen, living room, and dining room [...]

- 2 beds
- 2 baths
- Condo
- For sale
- 1930 sq ft



Beba Cabello - Rosarito Real Estate Broker | Baja Open House

Baja Open House

beba@bajaopenhouse.net



Basics

Date added: Added 2 years ago
Type: Condo
Bathrooms: 2 baths
Association Fees: 540 USD/mo

Category: For sale
Bedrooms: 2 beds
Area, sq ft: 1930 sq ft

Amenities & Features

Amenities: 24-hour security, Basketball Courts, BBQ Area, Beach Access, Club house, Covered parking, Gym, Jacuzzi, Oceanfront pool, Swimming pool, Tennis Court, Walkways

Features: Balcony, Central Elevator, Dishwasher, Dryer, Forced Air Heating, Fully Equipped, High speed internet available, Laundry Room, Microwave, Ocean front, Ocean view, Pets Allowed, Recessed Lighting, Refrigerator, Stove, Walking closets, Washer

