



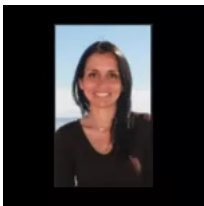
\$625,000

**701 PALACIO DEL MAR TOWER 2 -
CARRETERA LIBRE TIJUANA - ENSENADA KM.
50.5 EL DESCANSO 22710**

<https://www.bajaopenhouse.com>

- 3 beds
- 3 baths
- Condo
- For sale
- 2870.27 sq ft

Brand-new oceanfront 3-bedroom condo for sale in Palacio del Mar Inside the Condo: Experience the stunning ocean views that can be enjoyed from every part of the living areas in this condo. The three-bedroom corner units boast an expansive wrap-around balcony with glass sliding doors that also encircle the front of the condo with access [...]



**Beba Cabello - Rosarito Real Estate
Broker | Baja Open House**

Baja Open House

beba@bajaopenhouse.net

Basics



Date added: Added 2 months ago

Type: Condo

Bathrooms: 3 baths

Association Fees: 540 USD/mo

Category: For sale

Bedrooms: 3 beds

Area, sq ft: 2870.27 sq ft

Amenities & Features

Amenities: 24-hour security, Basketball Courts, BBQ Area, Beach Access, Covered parking, Gardened Oceanfront walkway, Gym, Jacuzzi, Oceanfront pool, Swimming pool, Tennis Court, Walkways

